

YUDO®

Integrated Engineering Solution



TINA GP Technical Date

TINA GP General Purpose

TINA-GP 适用范围广，多种浇口类型为客户提供最优质服务，市场应用涉及家电、玩具、日用品、建筑等领域。

加热器、感温线分体化，操作简单，便于维护保养。

General purpose nozzle with various tip & bush structure

Simple structure for assemble and maintenance.



应用广泛，适用于大、中型模具

浇口位置、热阻长度按照客户要求设计制作

开放式、针阀式及多种规格、型号

加热器、感温线分体

General purpose for medium and large mold

100% order-made nozzle length

Open & valve, various types

Independent type H/T & T/C

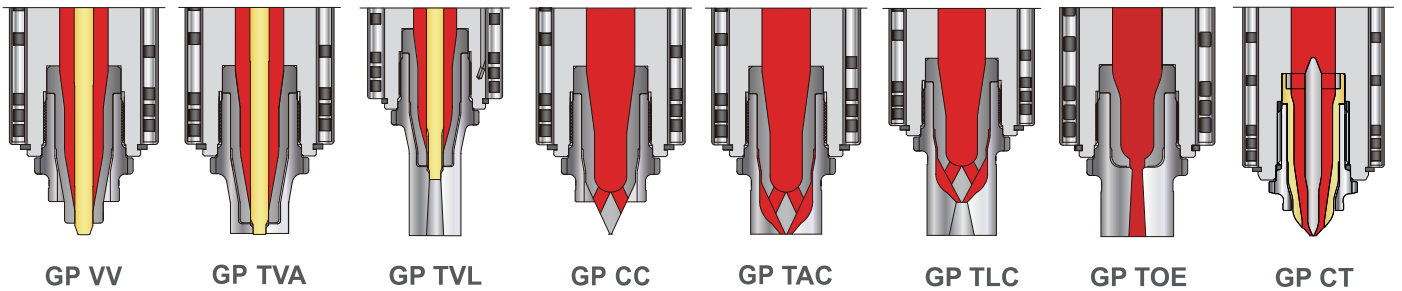


柳道万和（苏州）热流道系统有限公司
YUDO(SUZHOU) HOT RUNNER SYSTEMS CO.,LTD.
TEL:(86)512-6504-8882 FAX:(86)512-6504-6886
E-mail:suzhou@yudosuzhou.com

东莞柳道贸易有限公司
YUDO TRADING CO.,LTD.
TEL:(86)769-8539-4466 FAX:(86)769-8539-4455
E-mail:info@yudo.com.cn

青岛柳道贸易有限公司
YUDO(QINGDAO)TRADING CO.,LTD.
TEL:(86)532-8765-1698 FAX:(86)532-8765-1632
E-mail:qingdao@yudoqingdao.com

Parameter



Unit:mm

System Size		Runner	Valve pin	Length	Injection Volume
TINA GP 10	Open	10	--	90-300	200g
	Valve	10	4	90-300	
TINA GP 15	Open	15	--	90-600	800g
	Valve	15	6	90-600	
TINA GP 22	Open	22	--	110-900	1000g
	Valve	22	8	110-900	

Applications



Telephone



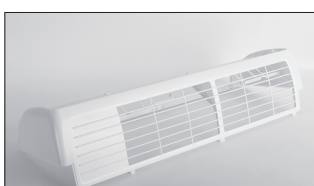
Grip



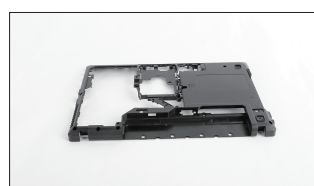
Battery Cover



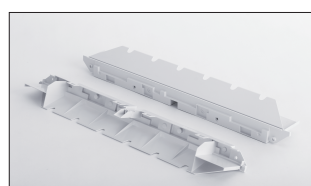
Box



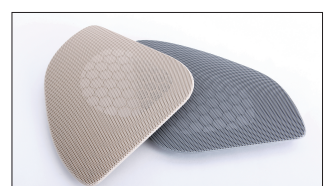
Airconditioner Cover



Bottom base



Printer Parts

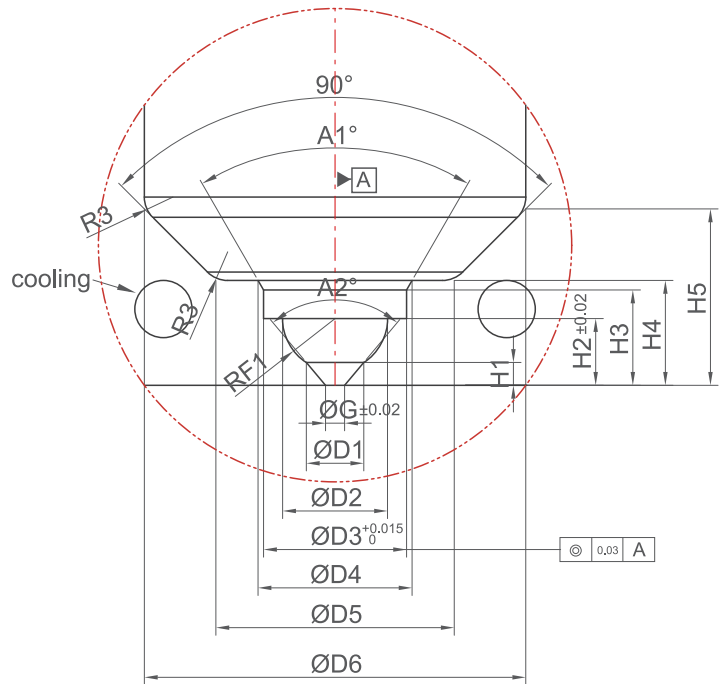
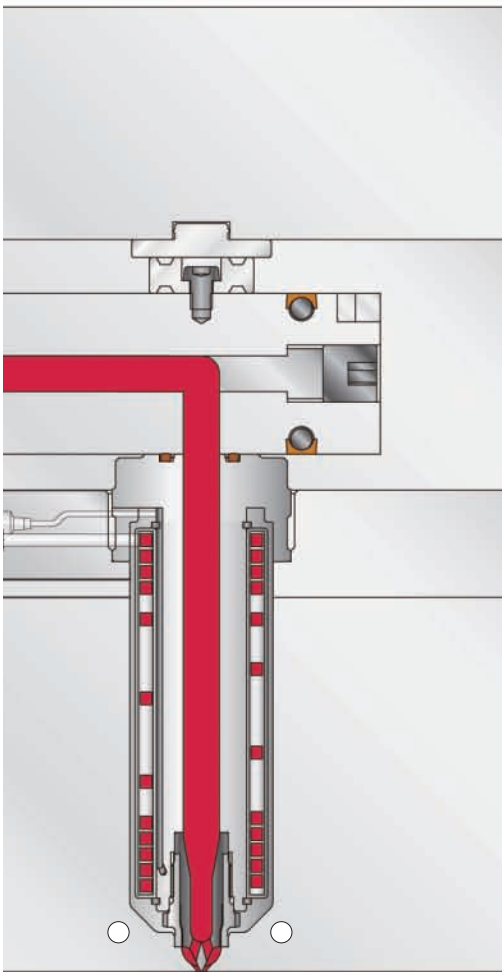


Speaker Cover

TINA GP

TINA GP CC

Gate Area Machining



- Tina GP CC 喷嘴型号是根据流道内径来定。
- 模具加工带公差部分必须保证。
- 浇口周围冷却水路必须添加。
- Nozzle of TINA GP and CC type is determined by inner diameter of hot runner.
- Tolerance of mold process must be guaranteed.
- Cooling Hole must be remained on gate area.

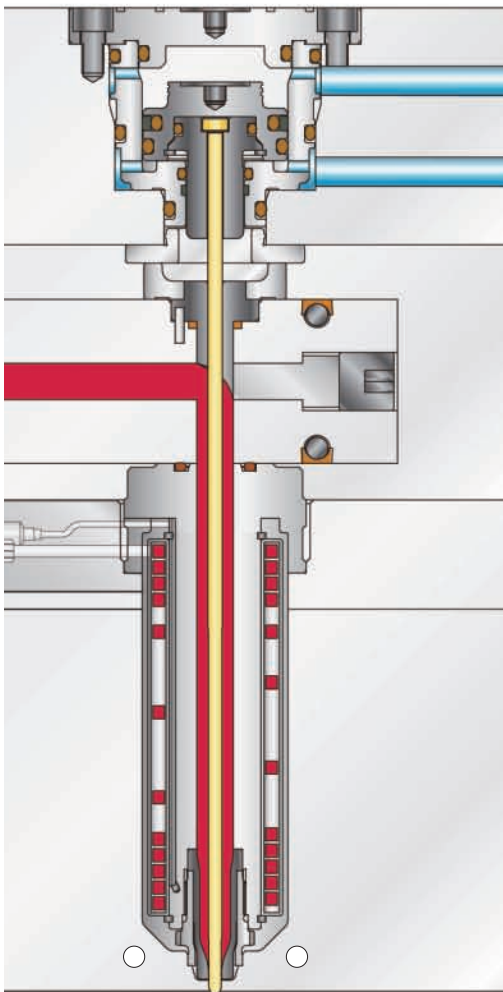
TINA GP CC TYPE SYSTEM

Unit:mm

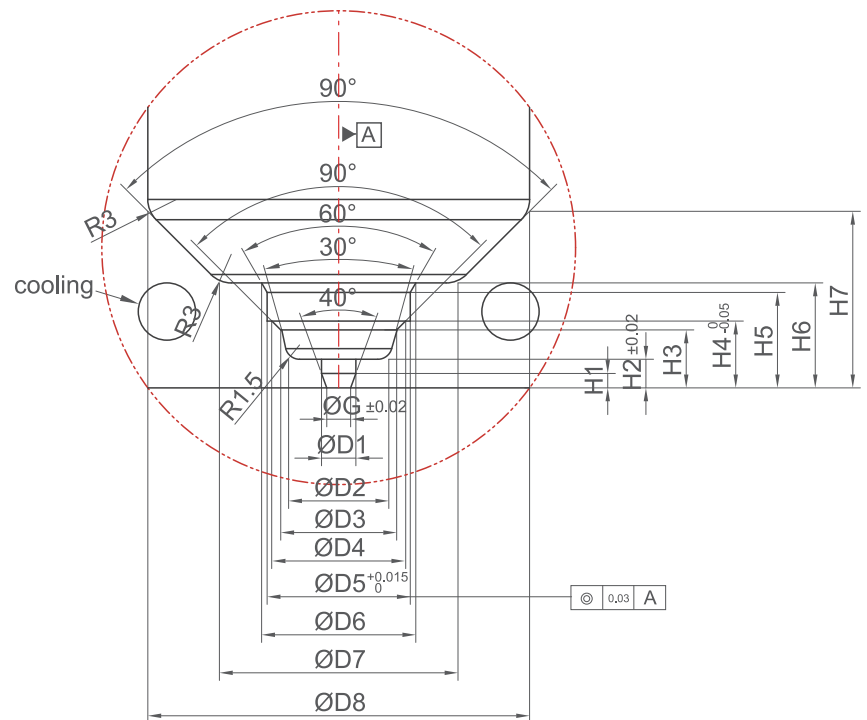
NOZZLE TYPE	ØG	ØD1	ØD2	ØD3	ØD4	ØD5	ØD6	H1	H2	H3	H4	H5	RF1	A1°	A2°
10	1.0/1.5/2.0	4.23/5.05/6.02	11	15	16.15	25	40	1.92/2.11/2.4	7	10	11	18.5	5.5	60	80
15	1.5/2.0/2.5	6.34/7.14/8.06	16.4	22	23.46	35	50	2.42/2.57/2.78	10	14	16	23.55	7.5	40	90
22	2.0/3.0/4.0	8.87/10.88/14.18	21.79	28	30.31	42	60	3.43/3.94/5.09	12	16	18	27	11	60	90

TINA GP

TINA GP VV



Gate Area Machining



- Tina GP VV 喷嘴型号是根据流道内径来定。
- 模具加工带公差部分必须保证。
- 浇口周围冷却水路必须添加。
- Nozzle of TINA GP and VV type is determined by inner diameter of hot runner.
- Tolerance of mold process must be guaranteed.
- Cooling Hole must be remained on gate area.

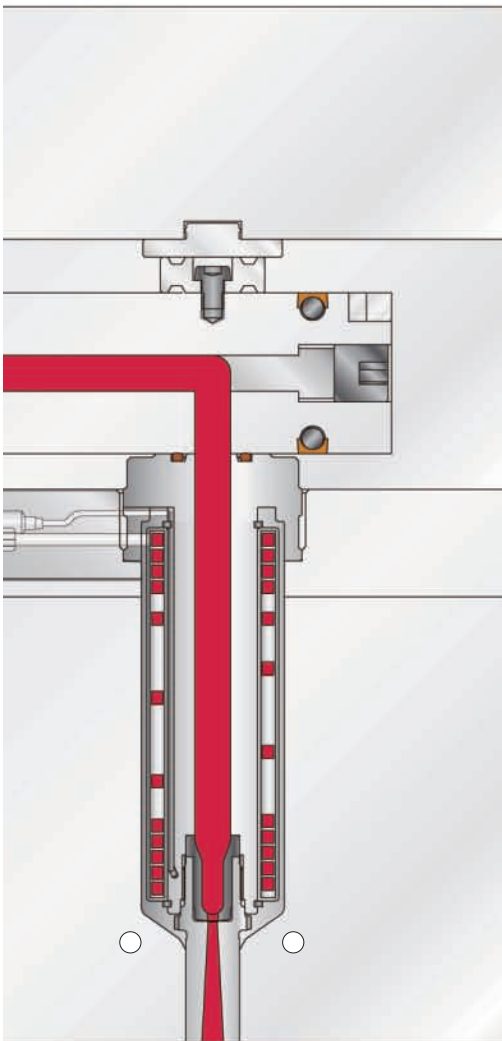
TINA GP VV TYPE SYSTEM

Unit:mm

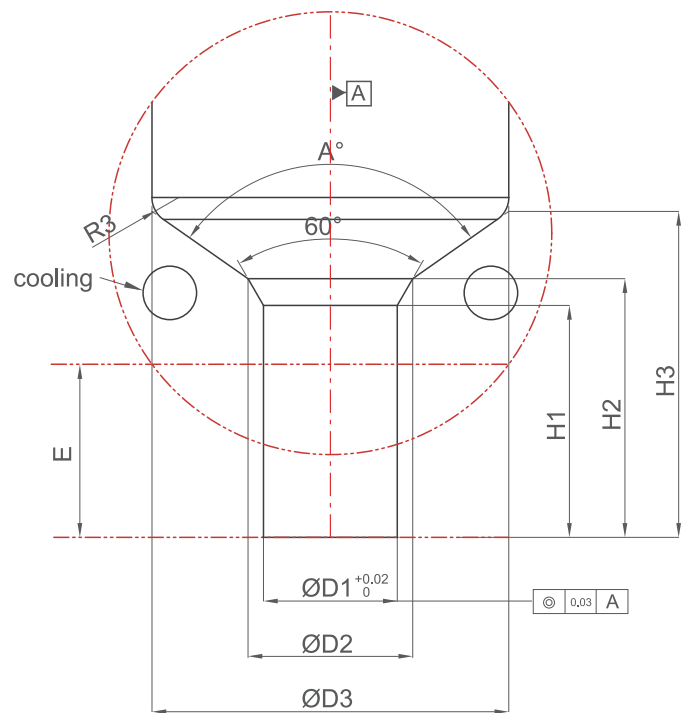
NOZZLE TYPE	ØG	ØD1	ØD2	ØD3	ØD4	ØD5	ØD6	ØD7	ØD8	H1	H2	H3	H4	H5	H6	H7
10	1.5/2.0/2.5	3.6	10.5	12.64	12.64	15	16.15	25	40	2.88/2.2/1.51	3	7	7	10	11	18.5
15	3.0/3.5/4.0	5.6	13	15.23	18.9	22	24.31	35	50	3.57/2.88/2.2	4	8.17	10	14	16	23.55
22(Ø8pin)	5.0/6.0	7.6	14.98	17.56	22	28	30.31	42	60	3.57/2.2	5	9.78	12	16	18	27
22(Ø10pin)	6.0/7.0/8.0	9.6	17	19.56	24	28	30.31	42	60	5/3.57/2.2	5	9.78	12	16	18	27

TINA GP

TINA GP TOE



Gate Area Machining



- Tina GP TOE 喷嘴型号是根据流道内径来定。
- 模具加工带公差部分必须保证。
- 浇口周围冷却水路必须添加。
- “E” 部分尺寸由客户选择预留加工。
- Nozzle of TINA GP and TOE type is determined by inner diameter of hot runner.
- Tolerance of mold process must be guaranteed.
- Cooling Hole must be remained on gate area.
- "E" size in the drawing is maintained for customer choice.

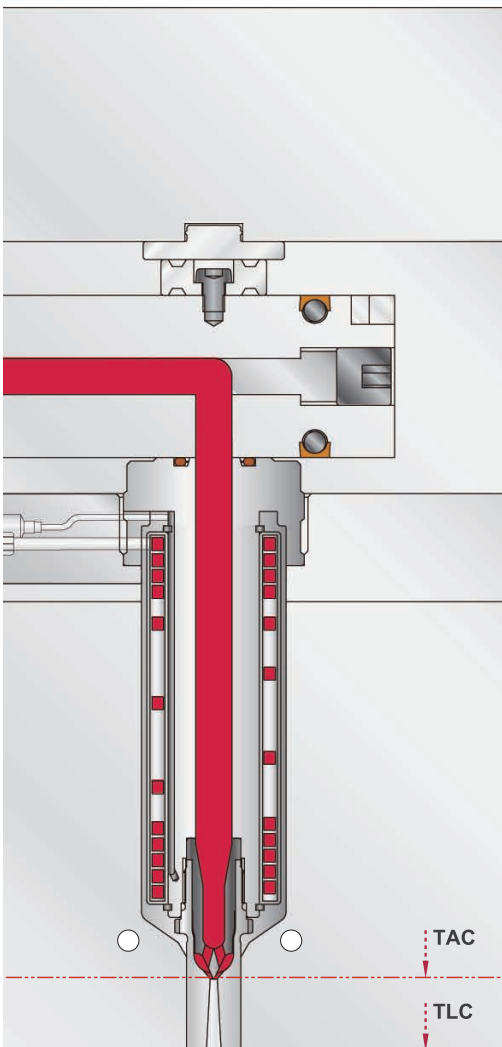
TINA GP TOE TYPE SYSTEM

Unit:mm

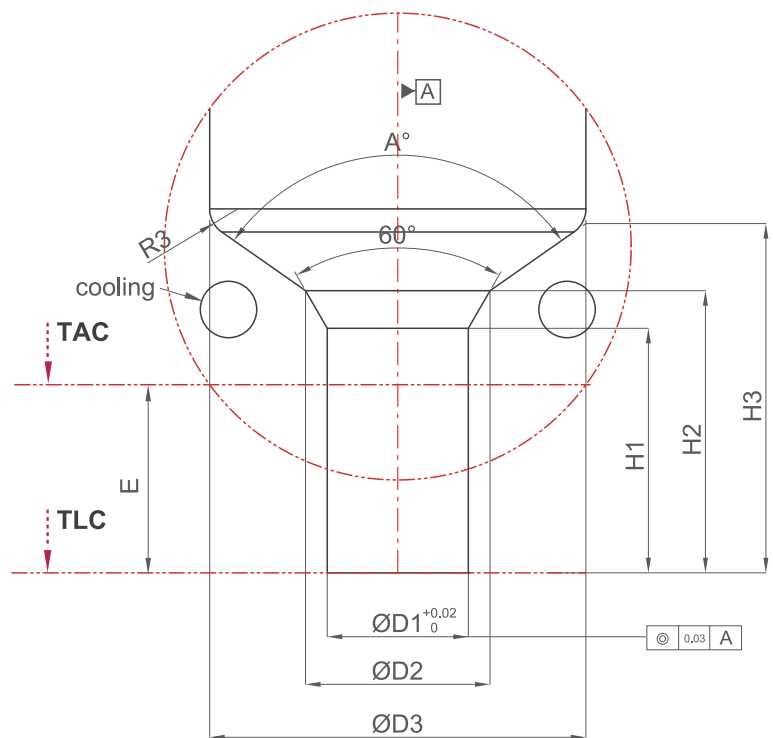
NOZZLE TYPE	ØD1	ØD2	ØD3	H1	H2	H3	A	E
10	15	18.46	40	26	29	36.54	110	20
15	22	26.62	50	40	44	50.78	120	30
22	25	33.08	60	38	45	52.77	120	30

TINA GP

TINA GP TAC/TLC



Gate Area Machining



- Tina GP TAC/TLC 喷嘴型号是根据流道内径来定。
- 模具加工带公差部分必须保证。
- 浇口周围冷却水路必须添加。
- “E” 部分尺寸由客户选择预留加工。
- Nozzle of TINA GP and TAC/TLC type is determined by inner diameter of hot runner.
- Tolerance of mold process must be guaranteed.
- Cooling Hole must be remained on gate area.
- "E" size in the drawing is maintained for customer choice.

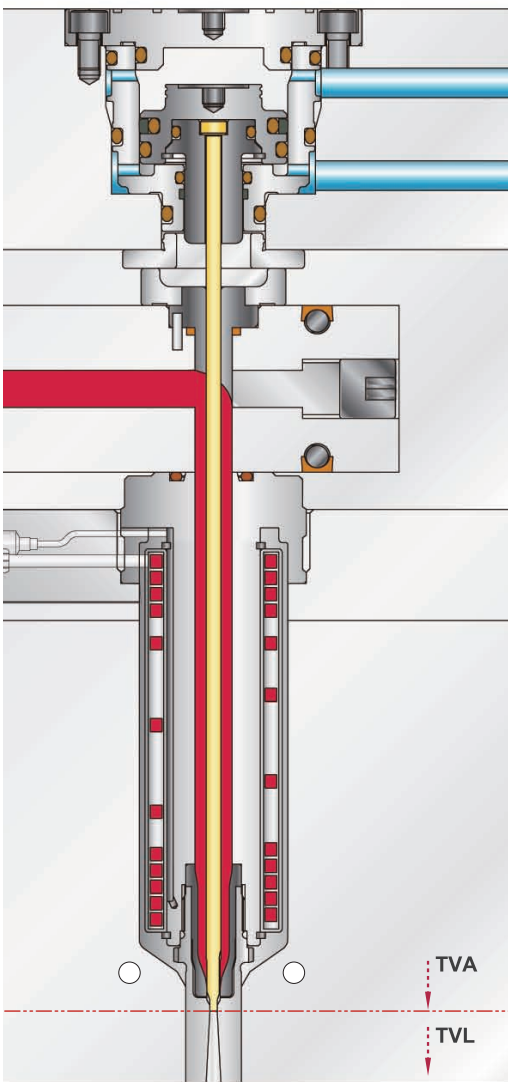
TINA GP TAC/TLC TYPE SYSTEM

Unit:mm

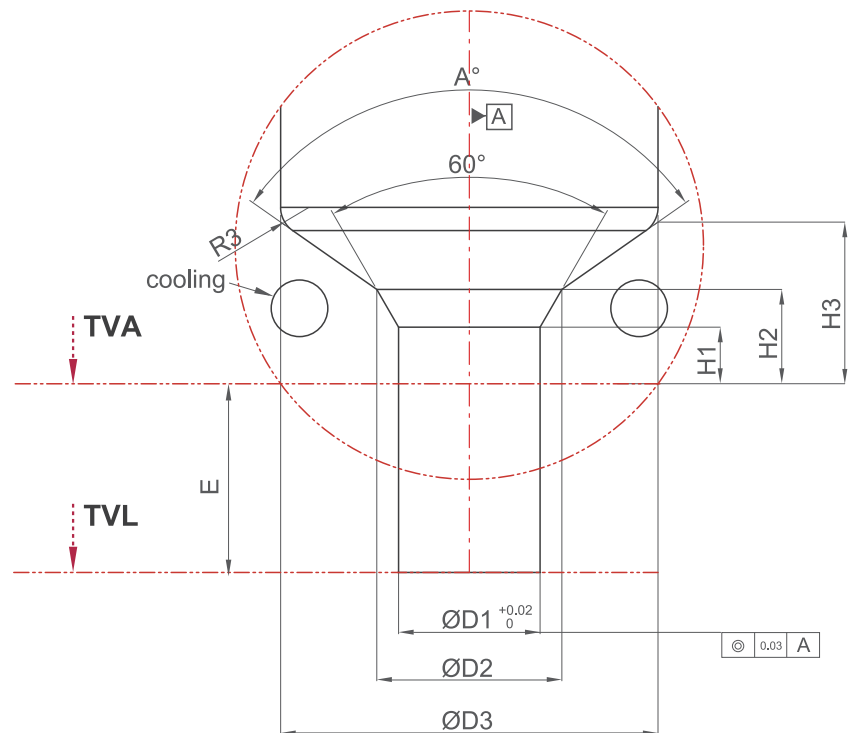
NOZZLE TYPE	ØD1	ØD2	ØD3	H1	H2	H3	A	E
10	15	19.62	40	26	30	37.14	110	20
15	22	28.39	50	39.46	45	52.6	110	30
22	25	33.08	60	38	45	52.77	120	30

TINA GP

TINA GP TVA/TVL



Gate Area Machining



- Tina GP TVA/TVL 喷嘴型号是根据流道内径来定。
- 模具加工带公差部分必须保证。
- 浇口周围冷却水路必须添加。
- “E” 部分尺寸由客户选择预留加工。
- Nozzle of TINA GP and TVA/TVL type is determined by inner diameter of hot runner.
- Tolerance of mold process must be guaranteed.
- Cooling Hole must be remained on gate area.
- "E" size in the drawing is maintained for customer choice.

TINA GP TVA/TVL TYPE SYSTEM

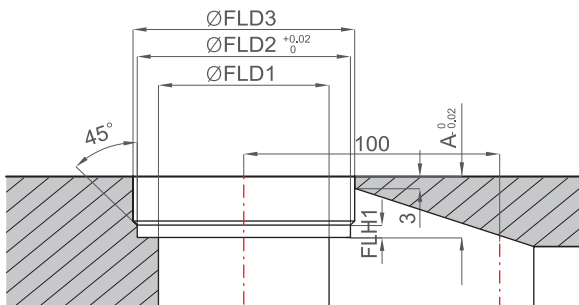
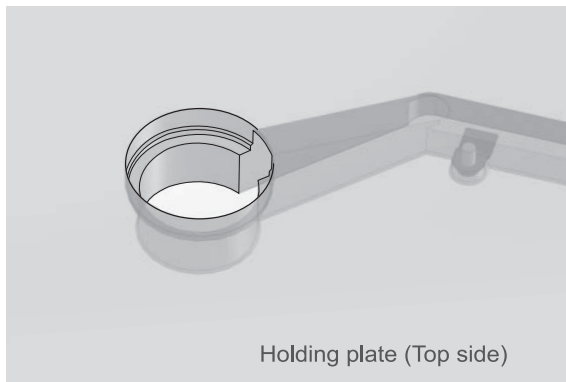
Unit:mm

NOZZLE TYPE	ØD1	ØD2	ØD3	H1	H2	H3	A	E(TVL)
10	15	19.62	40	6	10	17.14	110	20
15	18	28.39	50	6	15	22.6	110	30
22(Ø8Pin)	22	30.08	60	8	15	23.64	120	30
22(Ø10Pin)	22	33.08	60	8	15	22.77	120	

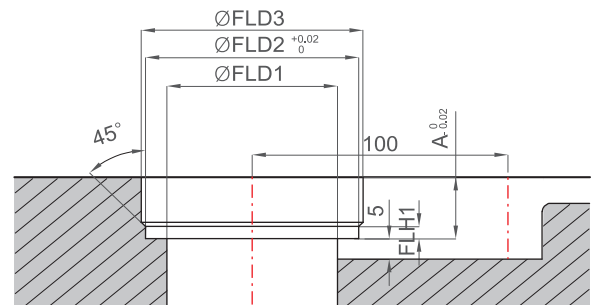
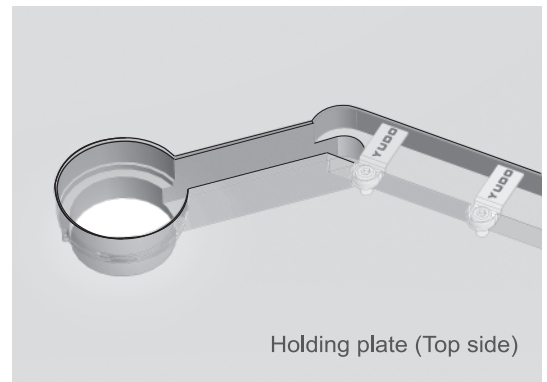
TINA GP

Flange area machining

A type



B type



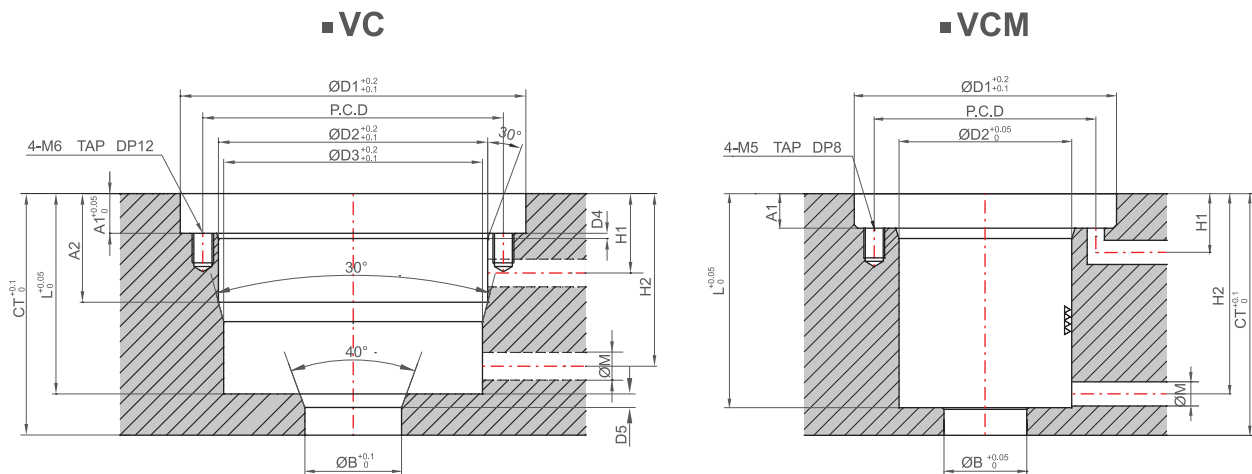
Unit : mm

Nozzle model	FLD1	FLD2	FLD3	FLH1	A
TINA-GP- 10	40	50	52	3	根据设计样式选择使用 Application depends on design and style.
TINA-GP- 15	50	60	62	3	
TINA-GP- 22	60	70	72	3	

- YUDO根据图A所示生产提供MODU系统。
但提供热流系统时，根据客户实际情况，“A”型不适用时可选用“B”型。
- YUDO manufactures and supplied MODU system as figure shown A.
Please note that alternative option, figure B, is also available where figure A is not applicable.

TINA GP

Cylinder are machining



VC

Unit : mm

Cylinder model	A1	A2	B	D1	D2	D3	D4	D5	PCD	H1	H2	M	L	CT
VC58	10	26.5	28	80	58	55	1	2.5	67	20	42	6	50	60
VC68	11.5	29.5	28	90	68	65	1.5	2.7	77	22.5	47	6	55	65
VC78	11.5	31.5	28	100	78	75	1.5	4	87	23	50	8	58	70

VCM

Unit : mm

Cylinder model	A	B	D1	D2	H1	H2	M	L	CT
VCM29.5	6.5	24	55.5	29.5	13.5	38	7	42	50
VCM35	6.5	24	61	35	13.5	38	7	42	50
	10	24	61	35	17	48	7	52	60
VCM40	6.5	24	66	40	13.5	38	7	42	50
	10	24	66	40	17	48	7	52	60
	10	24	66	40	17	53	7	57	65
	10	24	66	40	17	58	7	62	70
VCM50	6.5	24	76	50	13.5	38	7	42	50
	10	24	76	50	17	53	7	57	65
	10	24	76	50	17	58	7	62	70