

TINA MT Multi Tip

TINA-MT 是在一个喷嘴设计上设计多个咀尖注塑，浇口间距离最小化10mm

TINA-MT 各浇口出胶平衡，节省模具空间，利于降低模具成本

TINA-MT 系统主要适用于齿轮、扇叶等精密塑胶产品

TINA-MT is multigate on one nozzle system , minimum pitch is 10mm

Superb flow balance between each gate,economic system for customer

Suitable system for precise fan and gear.



多个浇口同时注塑

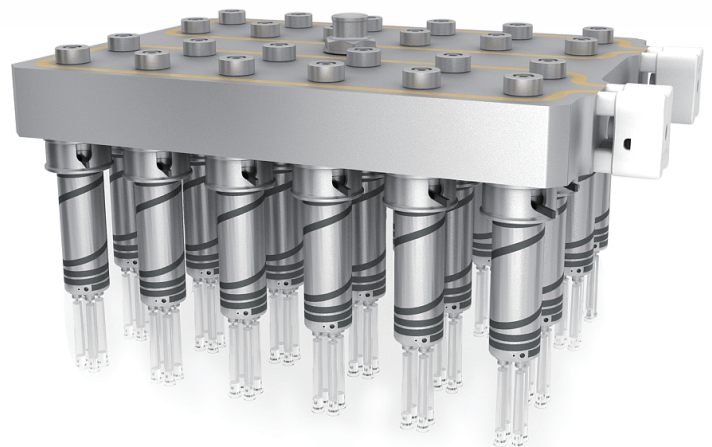
浇口间距离最小化

开放式/针阀式

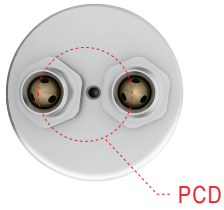
Simultaneous gate opening

Minimum gate pitch

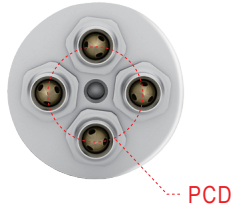
Offer open and valve type.



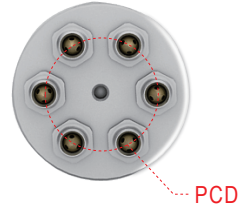
Parameter



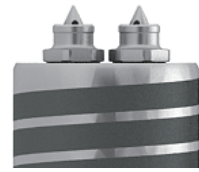
MT 2 drop



MT 4 drop



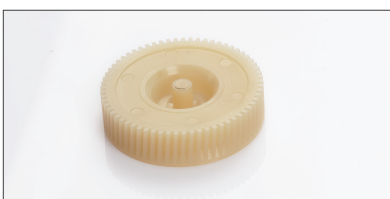
MT 6 drop



Unit:mm

NO. GATE	2drop	3drop	4drop	5drop	6drop
PCD	16-18	16-18	16-18	20-30	20-30

Applications



Gear



Gear



Medical Components